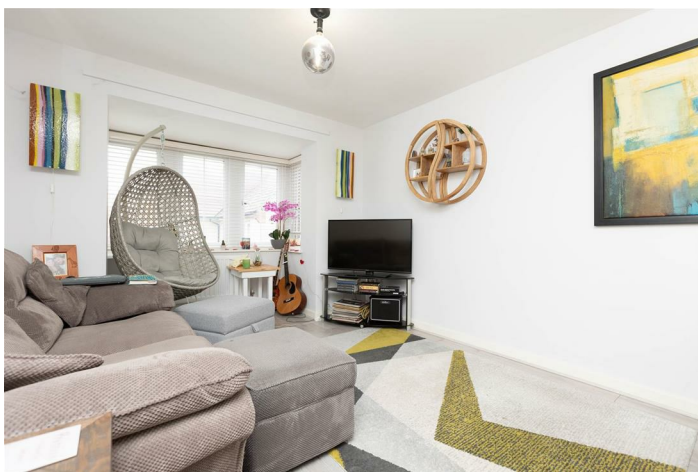


LEASEHOLD



Apartment - First Floor (EPC Rating: B)

**81 LINDSELL AVENUE, LETCHWORTH GARDEN CITY,  
HERTFORDSHIRE, SG6 4DG**

**Shared Ownership**

**£67,500**



First Step



B

# 2 Bedroom Apartment - First Floor located in Letchworth Garden City

**\*\*SHARED OWNERSHIP\*\*** A charming 2-bedroom apartment located on Lindsell Avenue in the picturesque Letchworth Garden City.

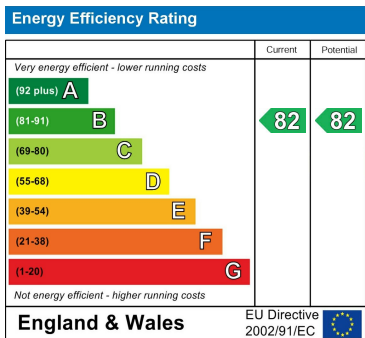
This delightful property boasts a spacious interior with 2 bedrooms, there is plenty of space for a small family or for those who enjoy having a guest room or home office.

Conveniently situated within walking distance to both the railway station and town centre, this property is perfect for those who value easy access to transportation and amenities. The allocated parking space ensures you'll never have to worry about finding a spot, and there is also visitor parking available.

Built in 2011, this apartment offers modern amenities in a well-maintained building. And with a 30% share priced at only £67,500, this is a fantastic opportunity to own a piece of this sought-after location.

Council Tax Band  
**B**

Energy Performance Graph



Call us on  
**01462 659 730**  
**sales@firststep.ltd**  
**www.firststep.ltd**

Agents Note: Whilst every care has been taken to prepare these particulars, they are for guidance purposes only. All measurements are approximate and are for general guidance purposes only and whilst every care has been taken to ensure their accuracy, they should not be relied upon and potential buyers are advised to recheck the measurements.

